

# HERBEAU COUTURE® - HANDPAINTS

Herbeau offers a wide selection of handpainted tiles, and the same patterns can be applied to our ceramic sinks, toilets and accessories. Each pattern is styled after traditional motifs, some of which date back to 17th century France. Combine these patterns with a century and a half of perfecting our ceramic techniques, and the result is our charming, authentic Powder Room Couture® collection.

**Avesnes** - A small town in northern France, Avesnes is known for its picturesque countryside. Designed by Jean Herbeau for the 130th anniversary of Herbeau, the flowers which decorate the hillsides and fill cottage window boxes inspired the rich, autumnal colors of this pattern.



**Moustier** - Named after and inspired by the famous earthenware factories in Moustier, a town in southern France, this pattern dates back to the 18th century. Available in a traditional blue, a delicate rose or in a polychrome scheme, this bird-and-floral motif is a delight to the eye in any color.



**Berain** - This pattern is based on an authentic 17th Century design by Jean Berain, royal designer to the Sun King Louis XIV. Renowned for his arabesque motifs, Jean Berain is also known for his tapestries, furniture, costume designs and elaborate stage settings.



**Rouen** - Nature-inspired patterns such as the Rouen Marly and the Vieux Rouen bring the French countryside indoors. These floral basket and symmetrical garland patterns truly show the skill and ability of our artisans.



**Sceau** - La vie en rose... during the 19th Century, ceramic artists began to move away from the highly stylized patterns of Art Nouveau in favor of a more relaxed naturalism. Today Herbeau artisans use a similar palette of sun-drenched reds and blues to celebrate a rose garden in all its summer glory.



**Romantique** - Come home to Couture®. A traditional element of French Country design, this classic combination of buttery yellow and French Blue looks fresh and inviting in a kitchen and casually elegant in a bath or powder room.



At Herbeau, earthenware, ceramic and fireclay sinks and bowls are handcrafted according to the tradition of 18th Century ceramic artisans. In keeping with these traditions, handpainted patterns may vary slightly in accordance with the painter's own aesthetic. Once the pattern has been applied, each piece of handpainted earthenware is fired and signed by the individual artist.

# 2018 HERBEAU FAUCET FINISHES

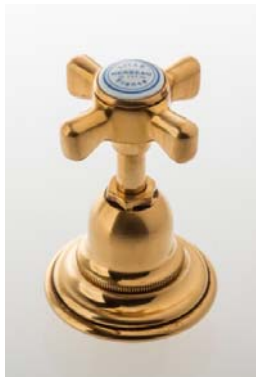
ROYALE / MONARQUE / POMPADOUR / LILLE / KITCHEN / POWDER ROOM



55 POLISHED BRASS  
(UNLACQ.)



49 SOLIBRASS



52 OLD GOLD



50 MATTE BLACK  
NICKEL (LACQ.)



71 POLISHED BLACK  
NICKEL (LACQ.)



48 POLISHED CHROME



56 POLISHED NICKEL



57 BRUSHED NICKEL



60 SATIN NICKEL



53 OLD SILVER



47 FRENCH  
WEATHERED BRASS



70 WEATHERED BRASS



68 ANTIQUE  
LACQUERED BRASS



67 ANTIQUE  
LACQUERED COPPER



80 POLISHED LACQ.  
COPPER



58 POLISHED COPPER  
(& BRASS)



46 FRENCH  
WEATHERED COPPER  
(& BRASS)



59 WEATHERED COPPER  
(& BRASS)

# 2018 HERBEAU METAL SINK FINISHES

SEINE / MOSELLE / RHONE / SAONE ALL FINISHES  
ARABESQUE / RINCE DOIGTS 47 / 55 / 70 / 56 / 57 / 60  
LOIRE 46 / 47 / 55 / 58 / 59 / 70 / 56 / 57 / 60  
BONNE MAMAN 46 / 47 / 55 / 58 / 59 / 70



58 POLISHED COPPER



59 WEATHERED COPPER



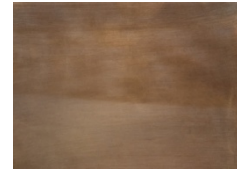
46 FRENCH WEATHERED  
COPPER



55 POLISHED BRASS



70 WEATHERED BRASS



47 FRENCH WEATHERED BRASS



56 POLISHED NICKEL



60 SATIN NICKEL



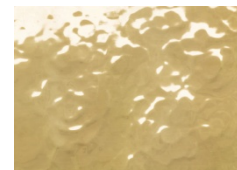
81 HAMMERED FRENCH POLISHED  
COPPER



61 HAMMERED WEATHERED  
COPPER



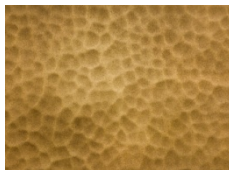
HAMMERED FRENCH WEATHERED  
COPPER



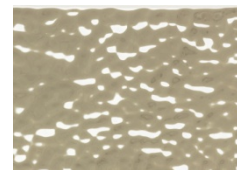
79 HAMMERED POLISHED BRASS



78 HAMMERED WEATHERED BRASS



83 HAMMERED FRENCH WEATHERED  
BRASS



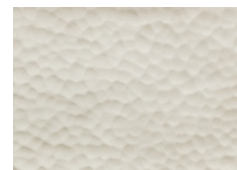
65 HAMMERED POLISHED NICKEL



77 HAMMERED BRUSHED NICKEL



Herbeau®  
L'Art du Sanitaire depuis 1857



66 HAMMERED SATIN NICKEL